

LSU
Deposit and Collateral Report
For the Quarter Ended December 31, 2018

Deposits Requiring Posting of Collateral:	Demand Deposit Sweep/MMA Repurchase	Certificates of Deposit	Total Deposits in Financial Institutions	Collateral (1)
LSU A&M, LSU Alexandria, LSU Eunice, LSU Shreveport, and LSU Health New Orleans				
Chase - LSU, Health Plan Premium	\$ 81,297,681		\$ 81,297,681	\$ 125,000,000
Cottonport Bank-LSU Ag Center	1,185,484		1,185,484	1,432,494
Capital One - LSU-A	1,704,758		1,704,758	1,704,758
St. Landry Bank - LSU-E	784,679		784,679	1,245,778
Campus Federal Credit Union - LSU-S		\$ 100,335	100,335	250,000
Capital One (Hibernia National Bank) - LSU-S	16,221,921		16,221,921	16,453,008
Chase-HSCNO	42,212,154	18,600	42,230,754	46,900,986
Total	\$ 143,406,677	\$ 118,935	\$ 143,525,612	\$ 192,987,024
LSU Health Shreveport				
JPMC-Shreveport	\$ 75,562,440		\$ 75,562,440	\$ 100,428,529
JPMC-Shreveport Endowment Fds	10,039,731		10,039,731	-
Total	\$ 85,602,171	\$ -	\$ 85,602,171	\$ 100,428,529
LSU Health Care Services Division				
JP Morgan Chase (HCSD)	\$ 101,209,308		\$ 101,209,308	\$ 102,836,728
Capital One (MCLNO Trust Fund)	3,737,567		3,737,567	3,832,120
Total	\$ 104,946,875	\$ -	\$ 104,946,875	\$ 106,668,848
Total Requiring Collateral	\$ 333,955,723	\$ 118,935	\$ 334,074,658	\$ 400,084,401
Deposits In Trust or Federal Obligations Not Requiring Collateral				
Federated Money Markets	\$ 20,155,973		\$ 20,155,973	
Total	\$ 20,155,973	\$ -	\$ 20,155,973	
Total Deposits	\$ 354,111,696	\$ 118,935	\$ 354,230,631	

(1) Collateral amounts include FDIC coverage of \$250,000 on Demand Deposits, \$250,000 on CD's and \$250,000 by the National Credit Union Share Insurance Fund on deposits with Campus Federal Credit Union.

(2) One Group & Federated Funds are no-load, open ended mutual funds investing in U.S. Treasury obligations.

LSU
Investment Summary
For the Quarter Ended December 31, 2018

Fund Description	As of 7/1/2018		As of 9/30/2018		As of 12/31/2018		As of 3/31/2019		As of 06/30/2019	
	Value	Cost	Market Value	Cost	Market Value	Cost	Market Value	Cost	Market Value	
Current Funds										
Cash/Sweeps	\$328,817,689	\$341,354,052	\$341,354,052	\$320,178,425	\$320,178,425	\$0	\$0	\$0	\$0	
Money Market Accounts/Repos (A)	\$28,531	\$1,086,482	\$1,086,482	\$1,199,033	\$1,199,033	\$0	\$0	\$0	\$0	
Certificates of Deposit	\$100,239	\$100,239	\$100,239	\$100,335	\$100,335	\$0	\$0	\$0	\$0	
Treasury Notes	\$6,431,371	\$6,457,022	\$6,411,798	\$21,788,628	\$22,050,453	\$0	\$0	\$0	\$0	
CMO's	\$12,194	\$1,191	\$1,178	\$0	\$0	\$0	\$0	\$0	\$0	
Agency Securities (B)	\$111,198,710	\$116,452,882	\$109,942,126	\$119,408,596	\$115,012,860	\$0	\$0	\$0	\$0	
Mortgaged Backed Securities	\$24,883,702	\$23,491,867	\$22,471,167	\$30,072,527	\$29,491,294	\$0	\$0	\$0	\$0	
Equity Securities (C)	\$66,752	\$0	\$71,528	\$0	\$62,863	\$0	\$0	\$0	\$0	
Bond Mutual Funds	\$43,624,820	\$46,697,531	\$42,755,183	\$46,697,531	\$42,326,162	\$0	\$0	\$0	\$0	
Municipal Bonds (E)	\$86,777,337	\$89,832,231	\$83,897,325	\$88,856,377	\$83,988,942	\$0	\$0	\$0	\$0	
Corporate Bonds (D)	\$109,778,076	\$173,924,058	\$166,928,153	\$208,643,687	\$201,569,802	\$0	\$0	\$0	\$0	
Total	\$711,719,421	\$799,397,555	\$775,019,231	\$836,945,139	\$815,980,169	\$0	\$0	\$0	\$0	
Endowment Funds										
Cash/Sweeps	\$10,875,343	\$10,242,801	\$10,242,801	\$10,039,731	\$10,039,731	\$0	\$0	\$0	\$0	
Money Market Accounts/Repos (A)	\$0	\$1,271,290	\$1,271,290	\$313,739	\$313,739	\$0	\$0	\$0	\$0	
Certificates of Deposit	\$18,600	\$18,600	\$18,600	\$18,600	\$18,600	\$0	\$0	\$0	\$0	
Agency Securities (B)	\$2,373,165	\$2,509,075	\$2,329,905	\$2,509,075	\$2,371,310	\$0	\$0	\$0	\$0	
Mortgaged Backed Securities	\$2,549,768	\$2,189,501	\$2,094,644	\$2,187,987	\$2,142,934	\$0	\$0	\$0	\$0	
Equity Securities (C)	\$10,779,017	\$5,275,089	\$10,351,048	\$5,474,705	\$9,238,034	\$0	\$0	\$0	\$0	
Mutual Funds	\$49,822,343	\$46,568,590	\$50,769,675	\$48,081,688	\$49,674,991	\$0	\$0	\$0	\$0	
Municipal Bonds (E)	\$3,101,638	\$3,184,432	\$3,047,390	\$3,184,432	\$3,098,234	\$0	\$0	\$0	\$0	
Corporate Bonds (D)	\$9,047,724	\$9,807,163	\$9,518,521	\$10,798,164	\$10,530,678	\$0	\$0	\$0	\$0	
Total	\$88,567,598	\$81,066,541	\$89,643,874	\$82,608,121	\$87,428,251	\$0	\$0	\$0	\$0	
Other Funds										
Cash/Sweeps	\$3,028,809	\$3,348,755	\$3,348,755	\$3,737,567	\$3,737,567	\$0	\$0	\$0	\$0	
Money Market Accounts/Repos (A)	\$32,231,117	\$10,448,038	\$10,448,038	\$18,643,201	\$18,643,201	\$0	\$0	\$0	\$0	
Agency Securities (B)	\$730,811	\$732,417	\$725,332	\$732,417	\$734,698	\$0	\$0	\$0	\$0	
Equity Securities (C)	\$410,341	\$0	\$421,699	\$0	\$338,222	\$0	\$0	\$0	\$0	
Total	\$36,401,078	\$14,529,210	\$14,943,824	\$23,113,185	\$23,453,688	\$0	\$0	\$0	\$0	
Grand Total	\$836,688,097	\$894,993,306	\$879,606,929	\$942,666,445	\$926,862,108	\$0	\$0	\$0	\$0	
Deposits in Financial Institutions										
Total Cash/Sweeps/MMA/Repos	\$374,981,489	\$367,751,418	\$367,751,418	\$354,111,696	\$354,111,696	\$0	\$0	\$0	\$0	
Total Certificates of Deposit	\$118,839	\$118,839	\$118,839	\$118,935	\$118,935	\$0	\$0	\$0	\$0	
Total Deposits	\$375,100,328	\$367,870,257	\$367,870,257	\$354,230,631	\$354,230,631	\$0	\$0	\$0	\$0	
Other Investments										
Treasury Notes	\$6,431,371	\$6,457,022	\$6,411,798	\$21,788,628	\$22,050,453	\$0	\$0	\$0	\$0	
CMO's	\$12,194	\$1,191	\$1,178	\$0	\$0	\$0	\$0	\$0	\$0	
Agency Securities (B)	\$114,302,686	\$119,694,374	\$112,997,363	\$122,650,088	\$118,118,868	\$0	\$0	\$0	\$0	
Mortgaged Backed Securities	\$27,433,470	\$25,681,368	\$24,565,811	\$32,260,514	\$31,634,228	\$0	\$0	\$0	\$0	
Equity Securities (C)	\$11,256,110	\$5,275,089	\$10,844,275	\$5,474,705	\$9,639,119	\$0	\$0	\$0	\$0	
Bond Mutual Funds	\$43,624,820	\$46,697,531	\$42,755,183	\$46,697,531	\$42,326,162	\$0	\$0	\$0	\$0	
Mutual Funds	\$49,822,343	\$46,568,590	\$50,769,675	\$48,081,688	\$49,674,991	\$0	\$0	\$0	\$0	
Municipal Bonds (E)	\$89,878,975	\$93,016,663	\$86,944,715	\$92,040,809	\$87,087,176	\$0	\$0	\$0	\$0	
Corporate Bonds (D)	\$118,825,800	\$183,731,221	\$176,446,674	\$219,441,851	\$212,100,480	\$0	\$0	\$0	\$0	
Total Other	\$461,587,769	\$527,123,049	\$511,736,672	\$588,435,814	\$572,631,477	\$0	\$0	\$0	\$0	
Grand Total	\$836,688,097	\$894,993,306	\$879,606,929	\$942,666,445	\$926,862,108	\$0	\$0	\$0	\$0	
LSU Paid Campuses										
Current Funds										
Cash/Sweeps	\$181,674,912	\$203,182,436	\$203,182,436	\$143,406,677	\$143,406,677	\$0	\$0	\$0	\$0	
Money Market Accounts/Repos (A)		\$1,086,482	\$1,086,482	\$1,199,033	\$1,199,033	\$0	\$0	\$0	\$0	
Certificates of Deposit	\$100,239	\$100,239	\$100,239	\$100,335	\$100,335	\$0	\$0	\$0	\$0	
Treasury Notes	\$5,946,560	\$5,981,106	\$5,936,380	\$5,981,106	\$5,992,880	\$0	\$0	\$0	\$0	
CMO's	\$12,194	\$1,191	\$1,178	\$0	\$0	\$0	\$0	\$0	\$0	
Agency Securities (B)	\$106,431,935	\$111,597,769	\$105,185,500	\$114,553,969	\$110,223,622	\$0	\$0	\$0	\$0	
Mortgaged Backed Securities	\$24,739,884	\$23,399,388	\$22,382,418	\$29,980,855	\$29,402,259	\$0	\$0	\$0	\$0	
Equity Securities (C)	\$66,752	\$0	\$71,528	\$0	\$62,863	\$0	\$0	\$0	\$0	
Bond Mutual Funds	\$43,624,820	\$46,697,531	\$42,755,183	\$46,697,531	\$42,326,162	\$0	\$0	\$0	\$0	
Municipal Bonds (E)	\$69,850,308	\$74,813,338	\$69,103,860	\$74,813,338	\$70,083,243	\$0	\$0	\$0	\$0	
Corporate Bonds (D)	\$109,778,076	\$171,411,630	\$164,444,383	\$191,498,075	\$184,365,617	\$0	\$0	\$0	\$0	
Total	\$542,225,678	\$638,271,110	\$614,249,587	\$608,230,919	\$587,162,691	\$0	\$0	\$0	\$0	
Endowment Funds										
Money Market Accounts/Repos (A)		\$1,271,290	\$1,271,290	\$313,739	\$313,739	\$0	\$0	\$0	\$0	
Certificates of Deposit	\$18,600	\$18,600	\$18,600	\$18,600	\$18,600	\$0	\$0	\$0	\$0	
Agency Securities (B)	\$2,373,165	\$2,509,075	\$2,329,905	\$2,509,075	\$2,371,310	\$0	\$0	\$0	\$0	
Mortgaged Backed Securities	\$2,549,768	\$2,189,501	\$2,094,644	\$2,187,987	\$2,142,934	\$0	\$0	\$0	\$0	
Equity Securities (C)	\$10,764,405	\$5,267,439	\$10,336,092	\$5,467,055	\$9,222,264	\$0	\$0	\$0	\$0	
Municipal Bonds	\$3,101,638	\$3,184,432	\$3,047,390	\$3,184,432	\$3,098,234	\$0	\$0	\$0	\$0	
Corporate Bonds (D)	\$9,047,724	\$9,807,163	\$9,518,521	\$10,798,164	\$10,530,678	\$0	\$0	\$0	\$0	
Total	\$27,855,300	\$24,247,500	\$28,616,442	\$24,479,052	\$27,697,759	\$0	\$0	\$0	\$0	
Other Funds										
Money Market Accounts/Repos (A)	\$23,626,037	\$1,805,015	\$1,805,015	\$9,956,205	\$9,956,205	\$0	\$0	\$0	\$0	
Agency Securities (B)	\$730,811	\$732,417	\$725,332	\$732,417	\$734,698	\$0	\$0	\$0	\$0	
Total	\$24,356,848	\$2,537,432	\$2,530,347	\$10,688,622	\$10,690,903	\$0	\$0	\$0	\$0	
Grand Total	\$594,437,828	\$665,056,042	\$645,396,376	\$643,398,593	\$625,551,353	\$0	\$0	\$0	\$0	

LSU
Investment Summary
For the Quarter Ended December 31, 2018

Fund Description	As of 7/1/2018			As of 9/30/2018			As of 12/31/2018			As of 3/31/2019		As of 06/30/2019	
	Value	Cost	Market Value	Cost	Market Value	Cost	Market Value	Cost	Market Value	Cost	Market Value		
LSU Health Shreveport													
Current Funds													
Cash/Sweeps S.	\$71,661,018	\$70,084,920	\$70,084,920	\$75,562,440	\$75,562,440								
Cash/Sweeps	\$71,661,018	\$70,084,920	\$70,084,920	\$75,562,440	\$75,562,440	\$0	\$0	\$0	\$0	\$0	\$0	\$0	
Money Market Accounts/Repos (A)	\$28,531	\$0	\$0	\$0	\$0								
Treasury Notes (B)	\$484,811	\$475,916	\$475,418	\$15,807,522	\$16,057,573								
Agency Securities (B)	\$4,766,775	\$4,855,113	\$4,756,626	\$4,854,627	\$4,789,238								
Mortgaged Backed Securities (B)	\$143,818	\$92,479	\$88,749	\$91,672	\$89,035								
Municipal Bonds (E)	\$16,927,029	\$15,018,893	\$14,793,465	\$14,043,039	\$13,905,699								
Corporate Bonds (D)	\$0	\$2,512,428	\$2,483,770	\$17,145,612	\$17,204,185								
Total	\$94,011,982	\$93,039,749	\$92,682,948	\$127,504,912	\$127,608,170	\$0	\$0	\$0	\$0	\$0	\$0	\$0	
Endowment Funds													
Cash/Sweeps	\$10,875,343	\$10,242,801	\$10,242,801	\$10,039,731	\$10,039,731								
Equity Securities (C)	\$14,612	\$7,650	\$14,956	\$7,650	\$15,770								
Mutual Funds	\$49,822,343	\$46,568,590	\$50,769,675	\$48,081,688	\$49,674,991								
Total	\$60,712,298	\$56,819,041	\$61,027,432	\$58,129,069	\$59,730,492	\$0	\$0	\$0	\$0	\$0	\$0	\$0	
Grand Total	\$154,724,280	\$149,858,790	\$153,710,380	\$185,633,981	\$187,338,662	\$0	\$0	\$0	\$0	\$0	\$0	\$0	
LSU HCSD													
Current Funds													
Cash/Sweeps	\$75,481,759	\$68,086,696	\$68,086,696	\$101,209,308	\$101,209,308								
Total	\$75,481,759	\$68,086,696	\$68,086,696	\$101,209,308	\$101,209,308	\$0	\$0	\$0	\$0	\$0	\$0	\$0	
Other Funds													
Cash/Sweeps	\$3,028,809	\$3,348,755	\$3,348,755	\$3,737,567	\$3,737,567								
Money Market Accounts/Repos (A)	\$8,605,080	\$8,643,023	\$8,643,023	\$8,686,996	\$8,686,996								
Equity Securities (C)	\$410,341	\$0	\$421,699	\$338,222	\$338,222								
Total	\$12,044,230	\$11,991,778	\$12,413,477	\$12,424,563	\$12,762,785	\$0	\$0	\$0	\$0	\$0	\$0	\$0	
Grand Total	\$87,525,989	\$80,078,474	\$80,500,173	\$113,633,871	\$113,972,093	\$0	\$0	\$0	\$0	\$0	\$0	\$0	
System Total	\$836,688,097	\$894,993,306	\$879,606,929	\$942,666,445	\$926,862,108	\$0	\$0	\$0	\$0	\$0	\$0	\$0	

* Negative balance in the cash/Sweeps section of the current funds does not represent an actual negative bank balance, rather it represents a timing difference of the allocation of the current funds.

** Small endowment funds at LSUS were moved to the LSUS Foundation to accommodate Workday

*** LSU Paid Campuses include the following: LSU, LSU Ag Center, LSUA, LSUE, LSUS, LSU Health New Orleans, and the LSU Pennington Biomedical Research Center

BENCHMARK NOTES (Example Only)

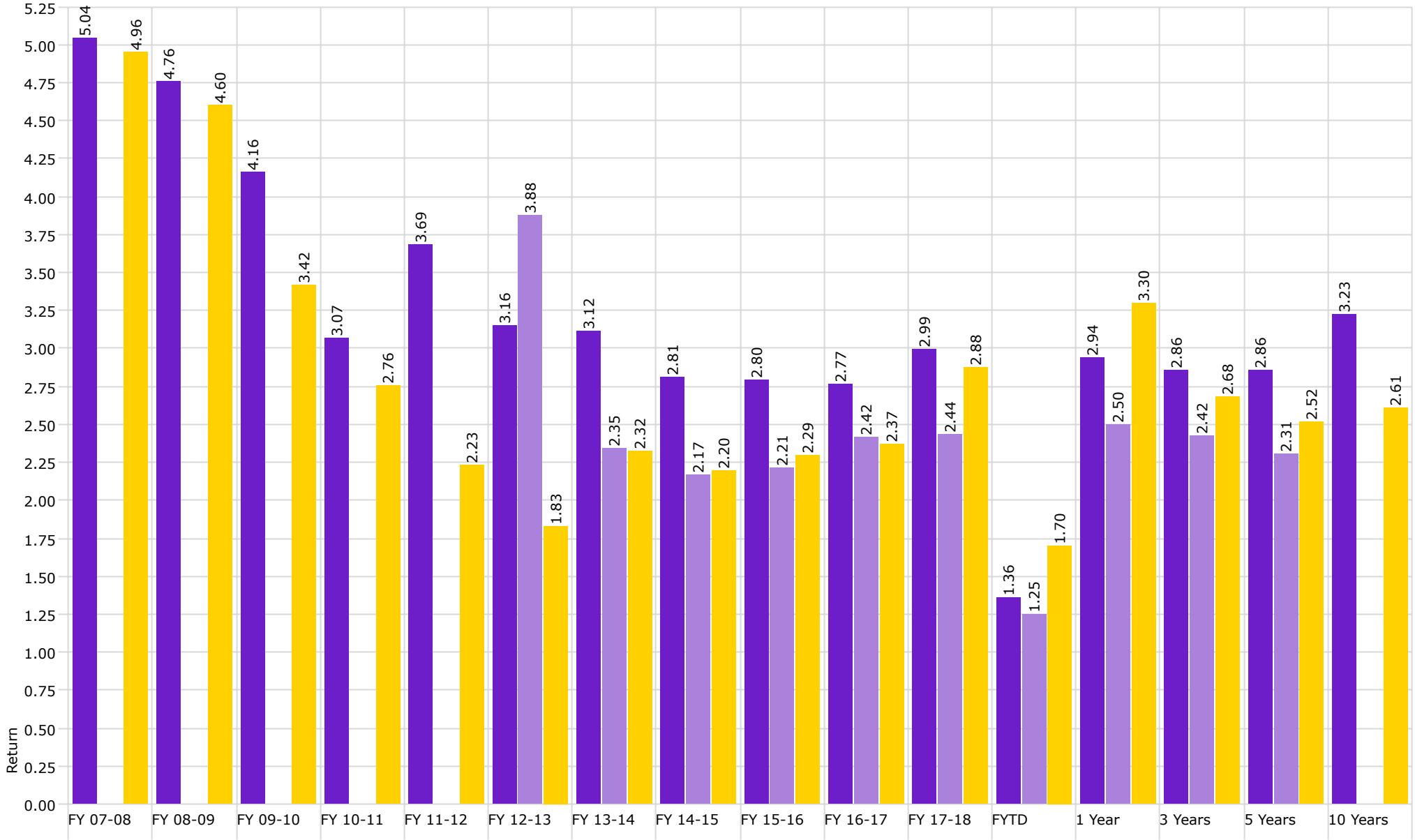
- (A) Benchmarked against 90 day T-Bill
- (B) Benchmarked against Barclay's US Agg Bond TR USD
- (C) US equities benchmarked against Russell 3000 and international against MSCI emerging market
- (D) Benchmarked against XYZ
- (E) Benchmarked against XYZ

Disclaimer: Pursuant to PM-9, corporate bonds/notes only available for investment beginning 7-1-2011
Louisiana law provides for restrictions on maturity and allocation and may effect benchmark comparison:



Investment Management Program Non Endowed Accounts **Realized Yield**

As of 12/31/2018



■ Non Endowed

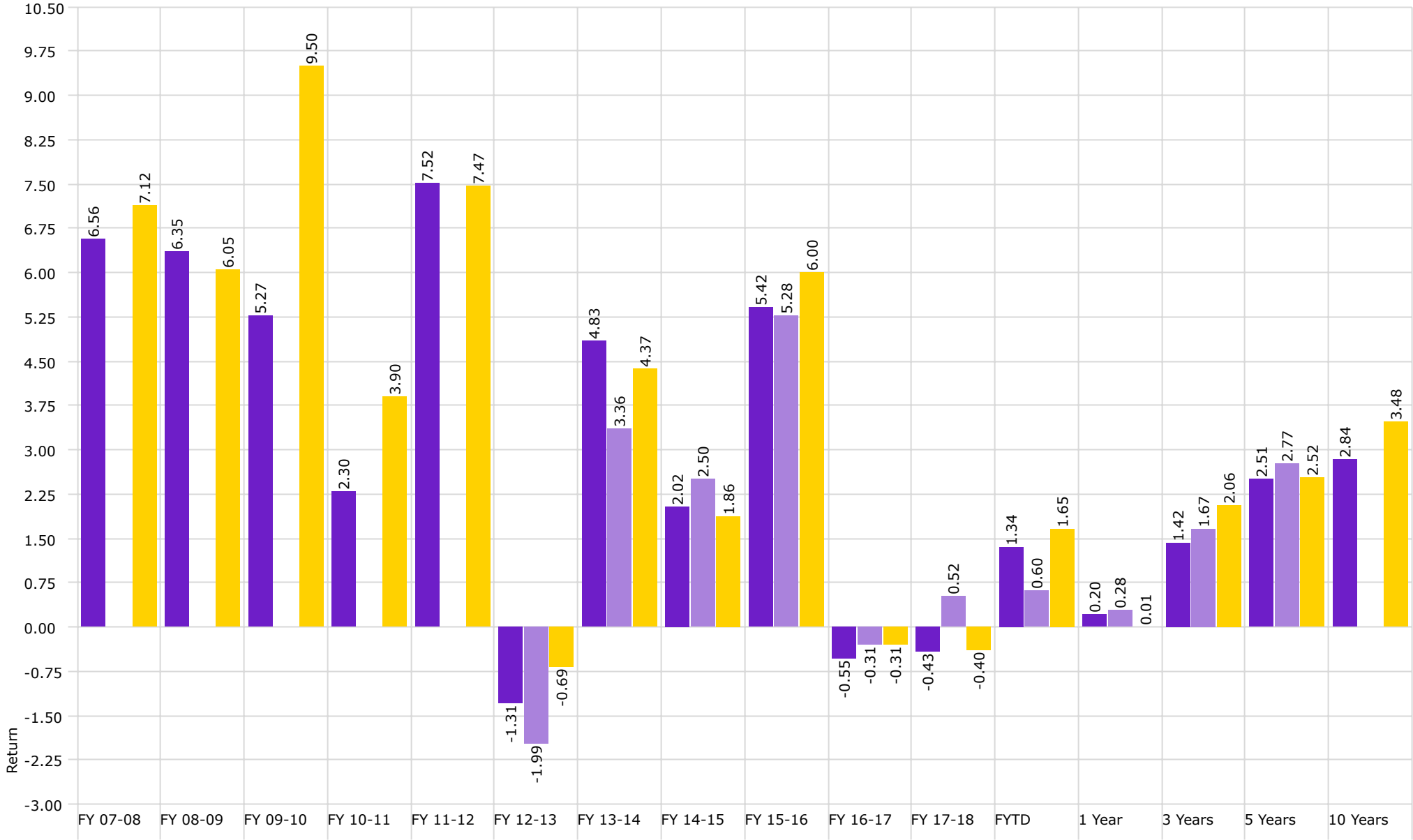
■ Health Plan

■ Barclays Aggregate Bond Index



Investment Management Program Non Endowed Accounts **Total Return**

As of 12/31/2018



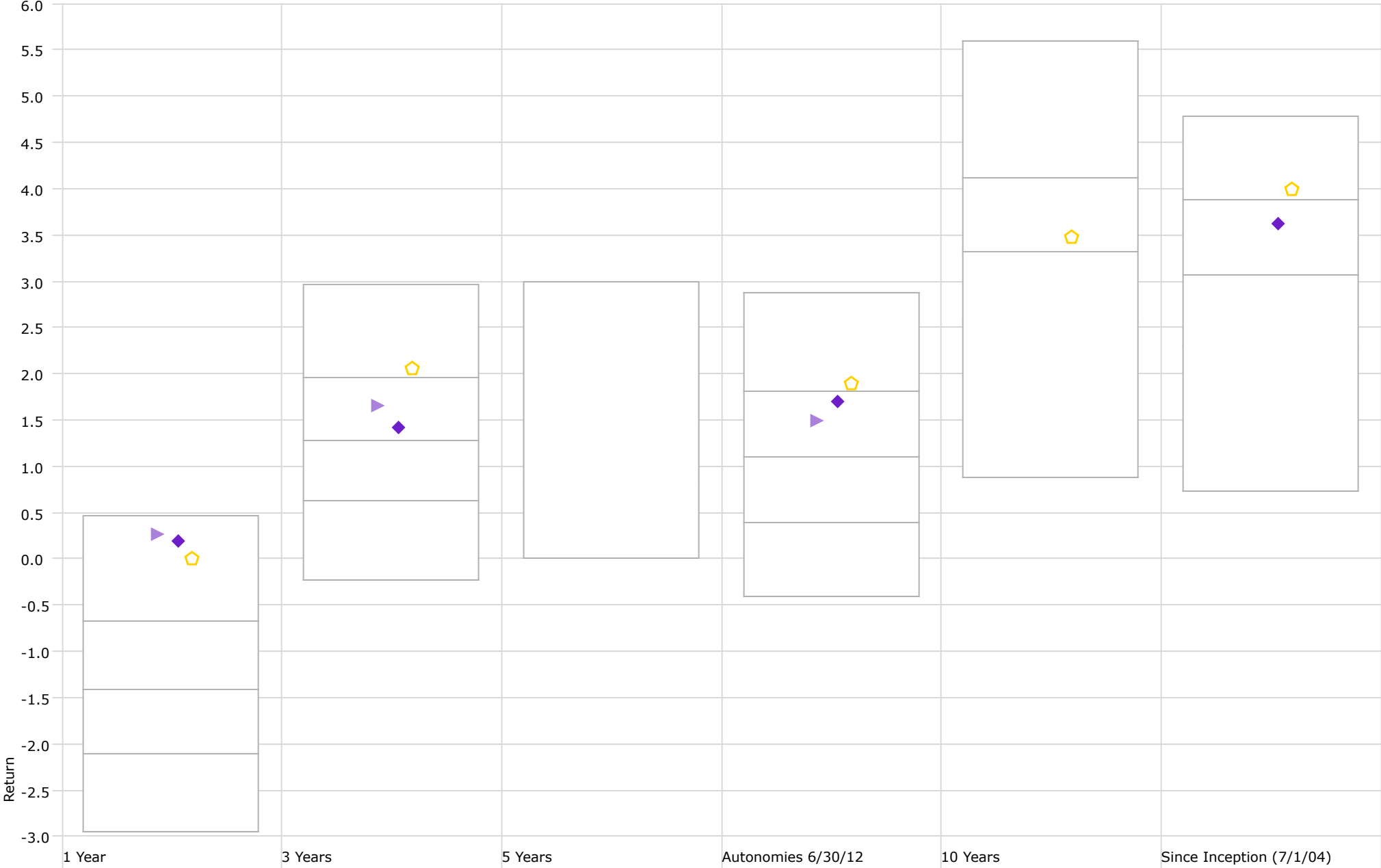
■ Non Endowed

■ Health Plan

■ Barclays Aggregate Bond Index

Performance Relative to Peer Group (Total Return)

Peer Group (5-95%): All Managed Investments - U.S. - Intermediate-Term Bond



◆ Non-Endowed

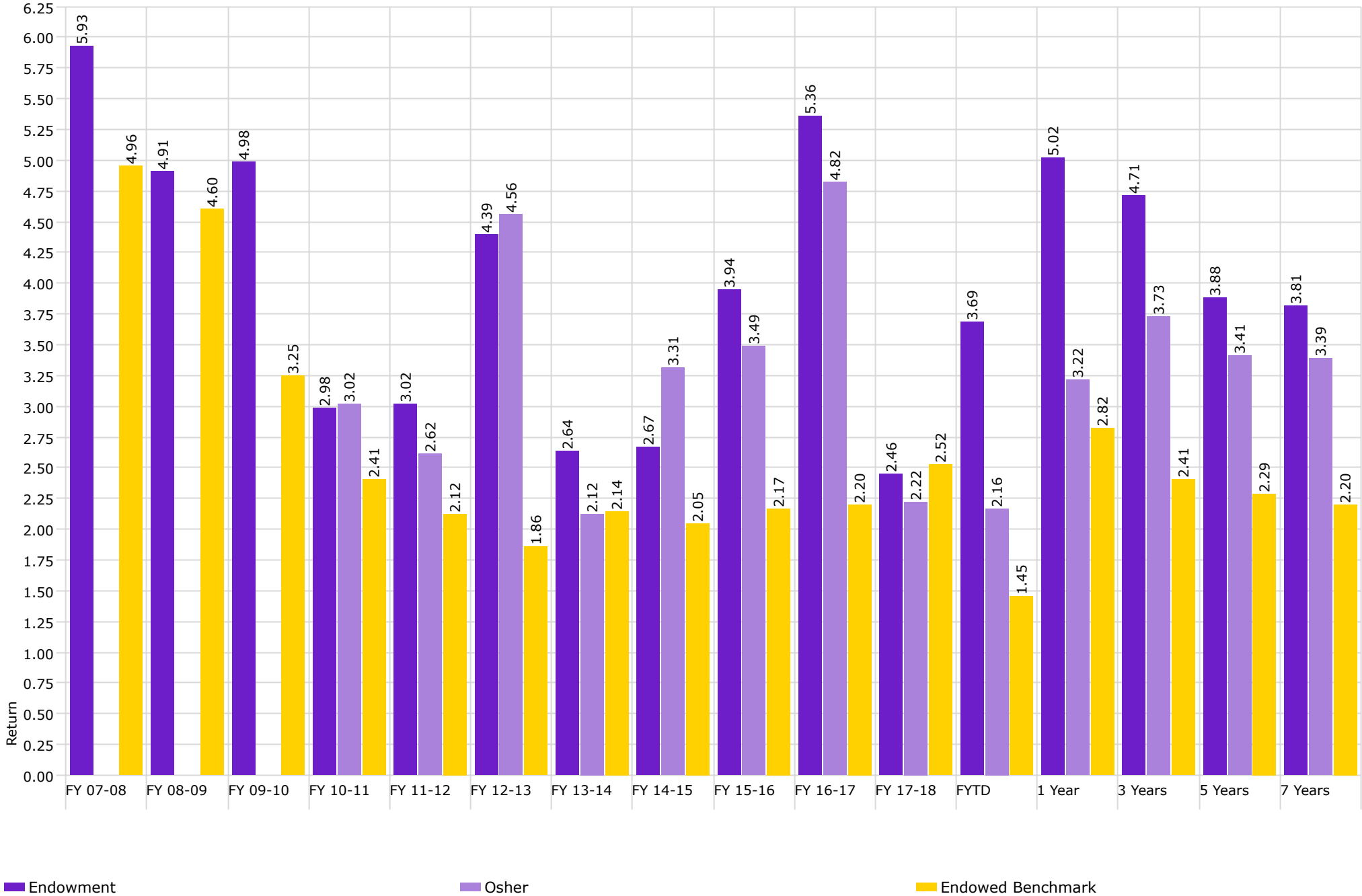
▶ Health Plan

⬠ Barclays Aggregate Bond Index



Investment Management Program Endowed Accounts **Realized Yield**

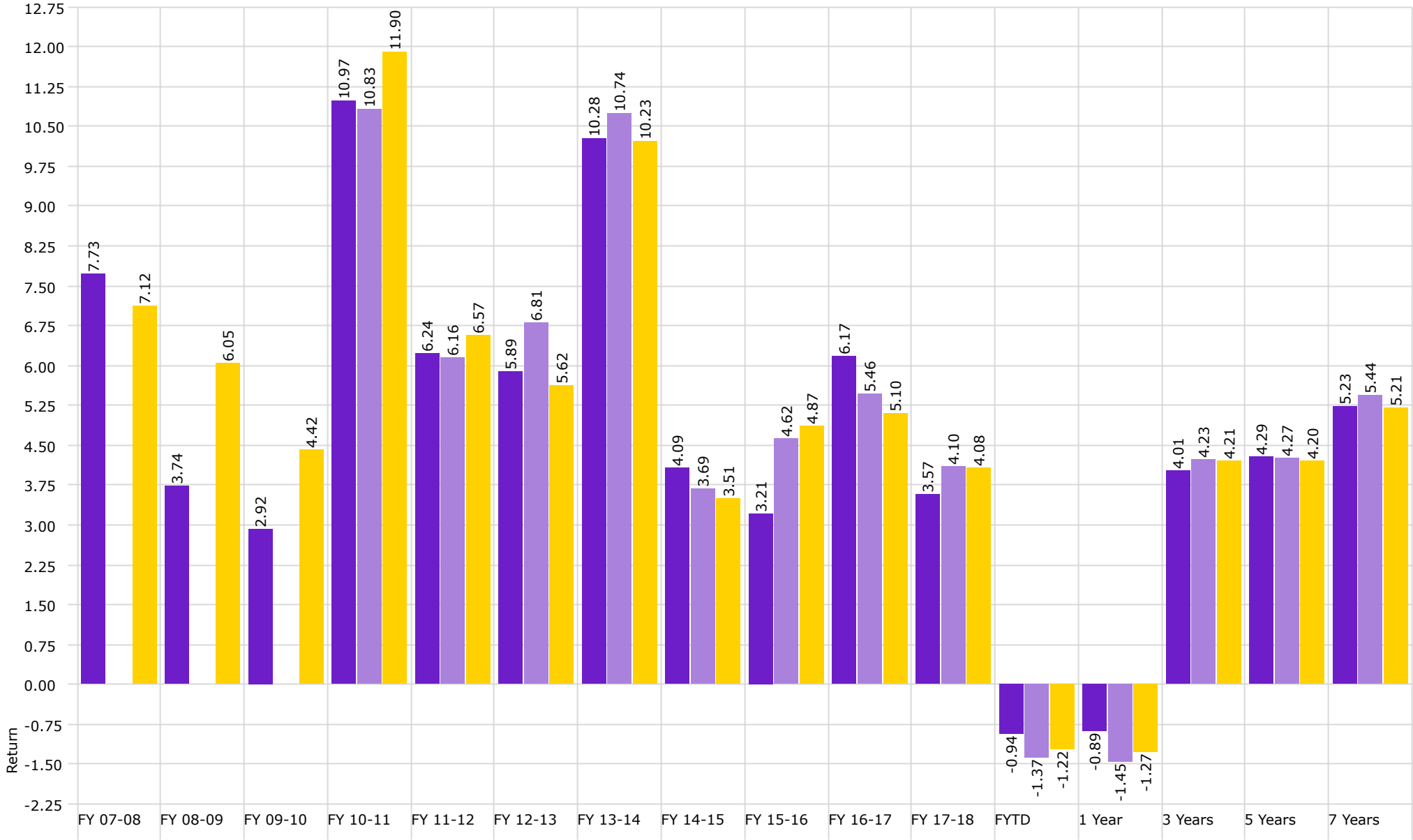
As of 12/31/2018





Investment Management Program Endowed Accounts **Total Return**

As of 12/31/2018



■ Endowment

■ Osher

■ Endowed Benchmark